

Employment/Educational Status Survey - Six Months Out, Class of 2011

Providence College - Undergraduate Day School Students

- 870 graduates based on degree records; 727 email addresses were available for sampling (84%)
- Total responses = 257; response rate of those surveyed = 35% (257/727)
- 95% confidence that responses fall between $\pm 5\%$ of reported values
- Respondent characteristics are a reasonable match for those of the entire graduating class of 2011:

GENDER	Class 2011	Respondents
Female	56%	64%
Male	44%	36%

ETHNICITY	Class 2011	Respondents
White, Non-Hispanic	83%	88%
Students of Color	11%	7%
Not Reported	6%	5%

Percentages may not total 100 due to rounding

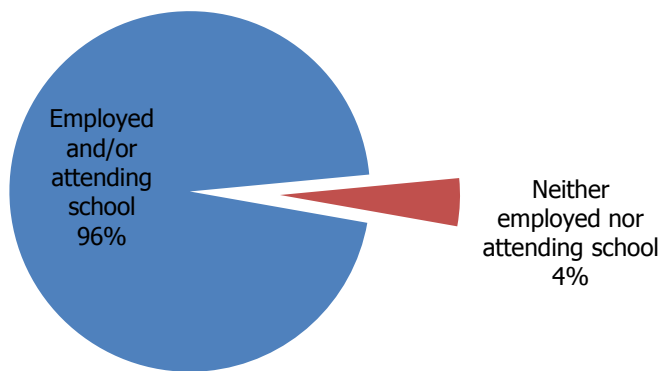
HOME STATE	Class 2011	Respondents
Massachusetts	36%	35%
Connecticut	12%	11%
New York	16%	19%
Rhode Island	14%	13%
New Jersey	9%	12%
Other New England	5%	4%
Other, incl Internat'l	8%	7%

Percentages may not total 100 due to rounding

DISCIPLINE (primary)	Class 2011	Respondents
Business	30%	28%
Social Sciences	25%	26%
Humanities	15%	16%
Pre-professional	16%	18%
Nat/Phy Sciences/Math	11%	10%
Fine/Performing Arts	2%	1%
Other	1%	1%

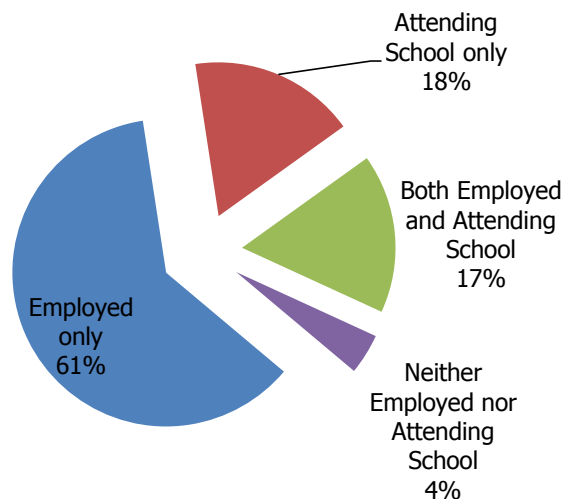
Percentages may not total 100 due to rounding

Employment/Educational status



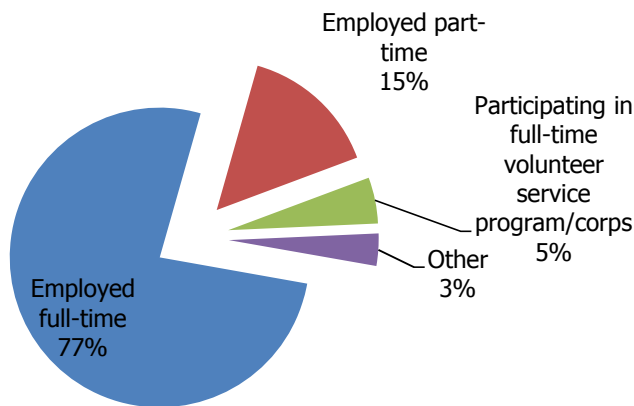
Ninety-six of every 100 graduates of the Class of 2011 (96%) reported they were either employed, or attending school, or both, six months following their graduation; of those who were doing neither, nearly all were seeking employment. The comparative percentages for the Classes of 2009 and 2007 were 93% and 97%, respectively.

Employment/Educational Status - Breakdown



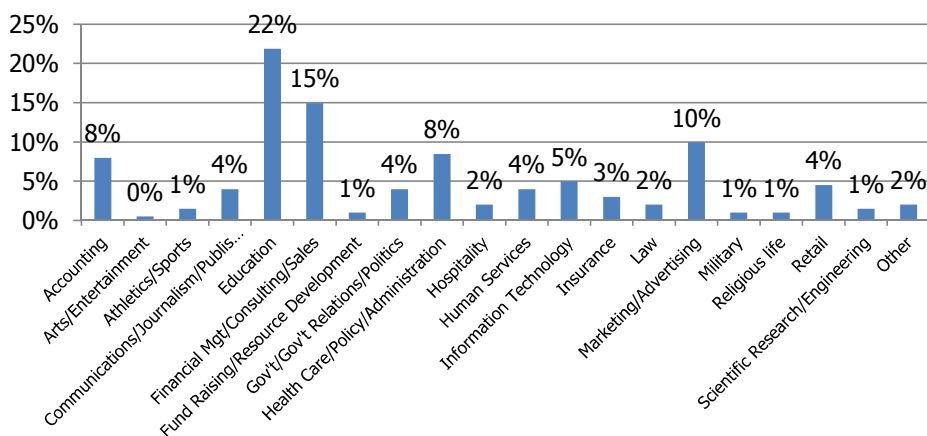
In terms of raw percentages (totaling more than 100% due to some individuals both working and attending school), 78% of 2011 graduates reported they were employed, 35% reported they were attending school, and 4% reported they were neither employed nor attending school six months following graduation. These numbers were very similar to the Class of 2009 (79%, 35%, and 7%, respectively).

Type of employment



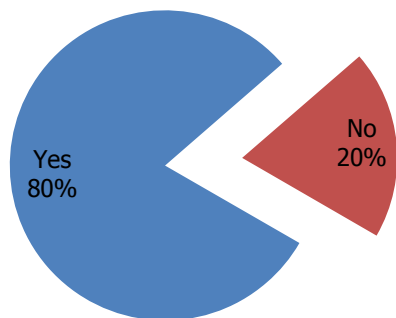
The vast majority of recent alums who were working reported they were doing so on a full-time basis. Compared to the Class of 2009 at six months out, the percentage of 2011 graduates working full-time increased (77% v. 70%) and the percentage working part-time decreased (15% v. 20%).

Field of employment



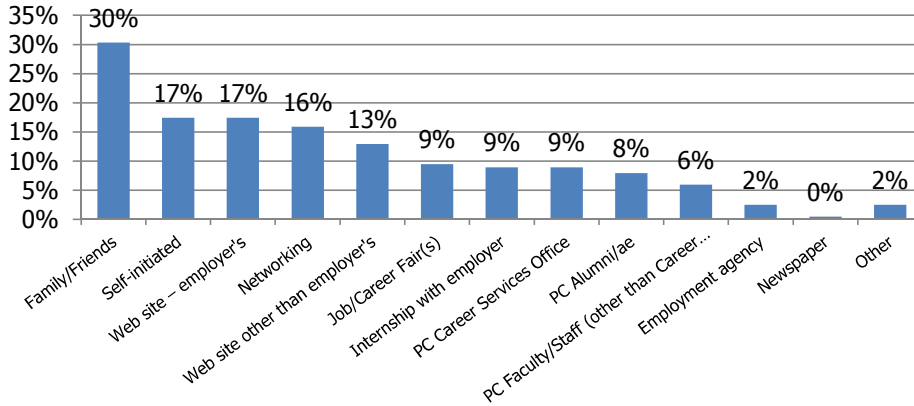
While there was significant variety in the Class of 2011's reported fields of employment, education (22%) was the most popular field by a fairly large margin, with almost the same percentage working in education as the next two most popular fields combined (financial management, consulting, or sales - 15% and marketing/advertising - 10%). These percentages did not differ dramatically from those reported by the Class of 2009 at six months out. [Note: percentages below 0.5 round to 0]

Is this [your] desired field of employment?



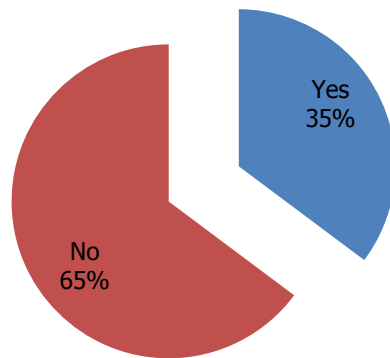
Four of every five 2011 graduates reported they were working in their desired fields (80%) six months following graduation. This represents an increase from the Class of 2009 (70%).

Job referral sources
(respondents chose all that applied)



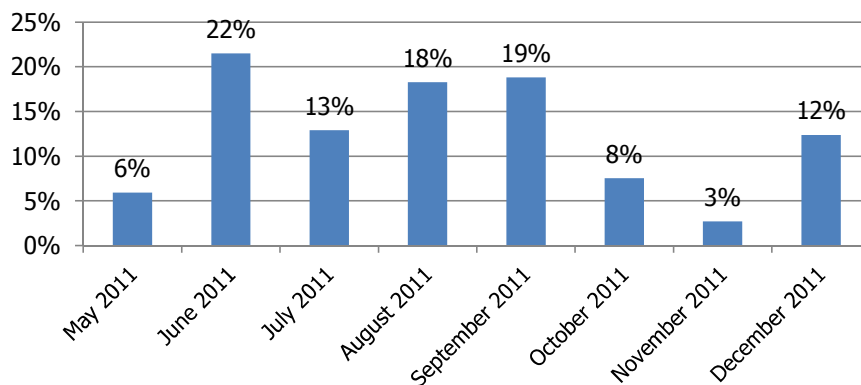
While recent alums reported they used a variety of methods to secure employment, the most popular referral sources by a significant margin for the Class of 2011 were family and friends (30%). These percentages were very similar to those reported by the Class of 2009 six months out. [Note: percentages below 0.5 round to 0]

Received job offer prior to PC graduation?



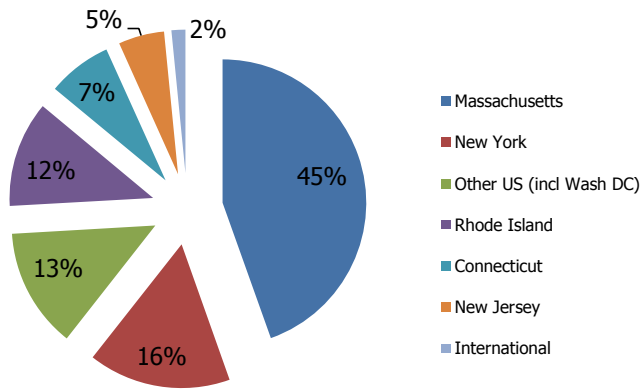
The majority of 2011 graduates reported they received their job offers following graduation. These percentages did not differ dramatically from those reported by the Class of 2009 at six months out.

Month in which employed



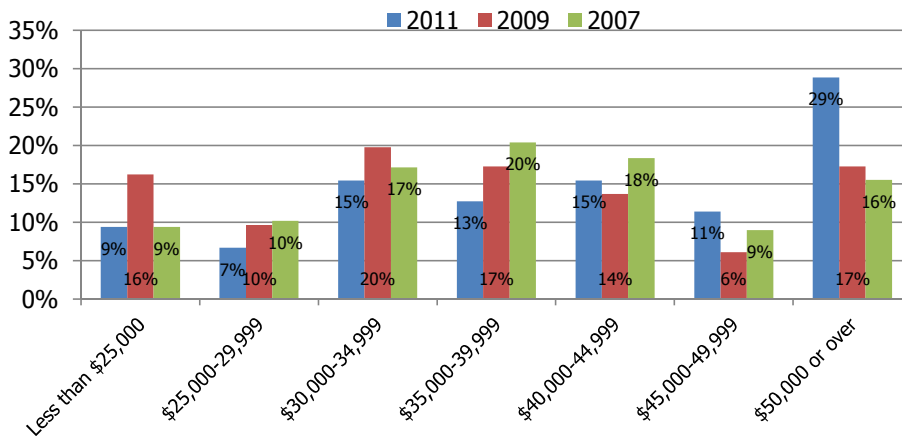
Most 2011 graduates reported they began working in June, August, or September (nearly two of every three) six months following graduation. These percentages differed from those reported by the Class of 2009, in that the Class of 2011 generally started their jobs earlier (41% in May, June, or July v. 32% for the Class of 2009).

State in which employed



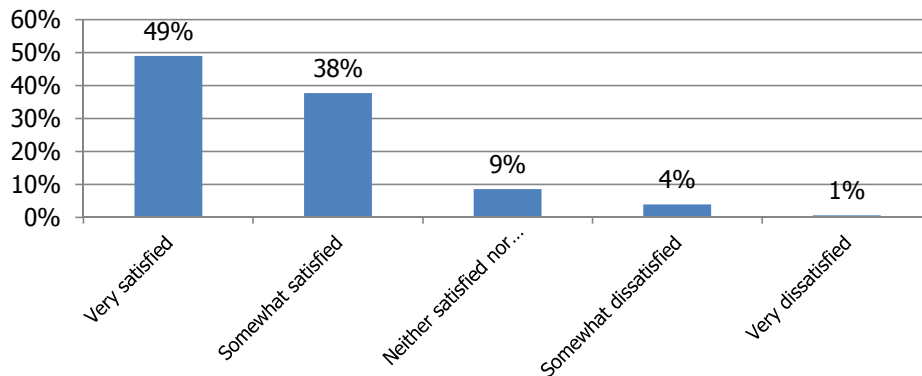
Nearly one of every two 2011 graduates reported at six months out that they worked in Massachusetts (45%) and four of every five worked in either Massachusetts, New York, Rhode Island, or Connecticut (80%). These percentages differed from those reported by the Class of 2009, in that 2011 graduates were more likely to work in Massachusetts (45% v. 32%) and less likely to work in Rhode Island (12% v. 18%) or Connecticut (7% v. 12%).

Salary (F/T employees only)



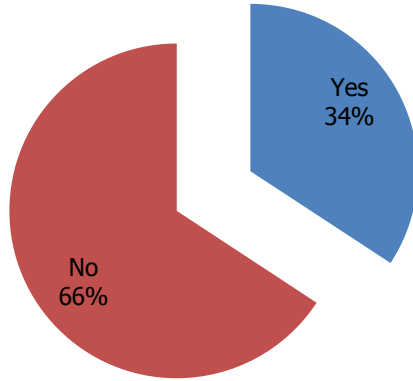
More than one of every two Class of 2011 graduates who were employed full-time at six months out reported they earned \$40,000/year or more (55%). Reported salaries have increased significantly, as 37% reported \$40,000/year or more in the Class of 2009 and 43% reported \$40,000/year or more in the Class of 2007. It is likely the Class of 2009 was affected most by the recent economic downturn.

Job satisfaction (F/T employees only)



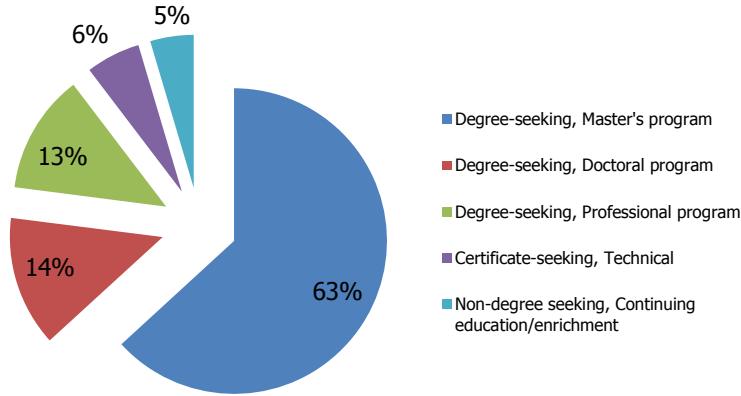
Nearly nine of every ten 2011 graduates who were employed full-time at six months out reported they were satisfied with their jobs (87%) and the majority claimed they were very satisfied. These percentages were very similar to those reported by the Class of 2007 and slightly higher than those reported by the Class of 2009 (5%, 8%, and 6% reported dissatisfaction in 2011, 2009, and 2007, respectively).

Currently attending school?



More than one of every three recent alums reported they were attending school (34%) six months following their graduation. The comparative percentage for the Class of 2009 was 36%. In addition, 85% of 2011 graduates who were not attending school six months following graduation reported they planned to attend school at some point in the future; this is the same percentage reported by the Class of 2009.

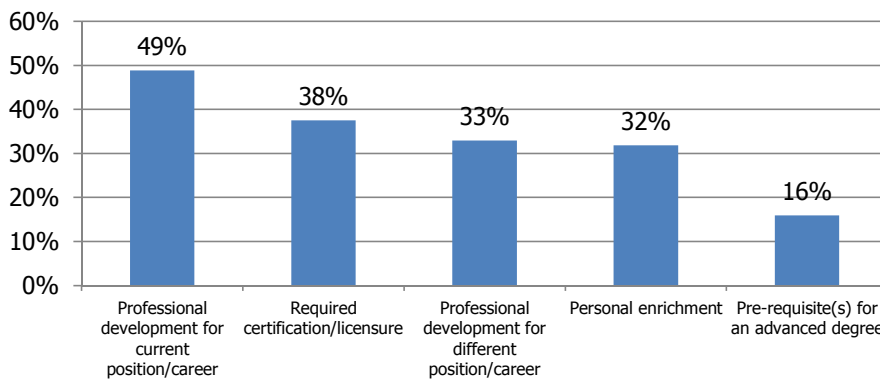
Educational status



The vast majority of 2011 graduates who were attending school reported they were pursuing master's degrees (63%) and just over one of every four (27%) reported studying towards a doctoral or professional degree. The comparative percentages for the Class of 2009 at six months out were 76% (master's) and 18% (doctoral/professional). As in 2009, 90% of 2011 graduates reported they were satisfied that their educational program was meeting their needs.

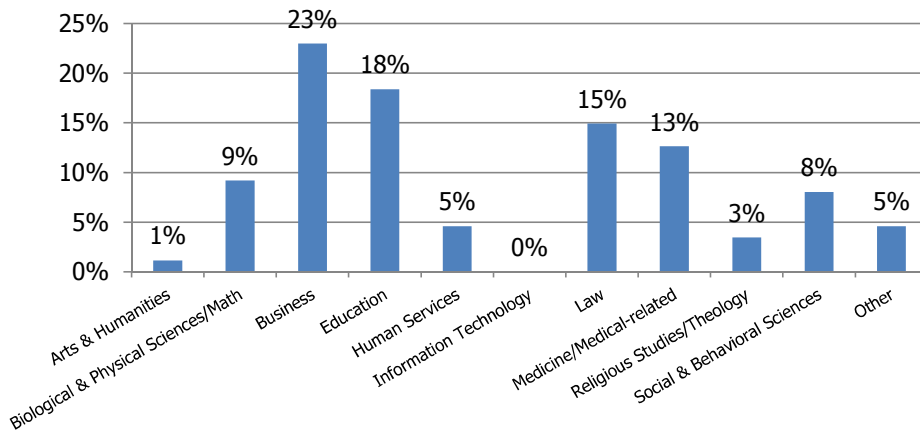
Reasons for attending school

(respondents chose all that applied)



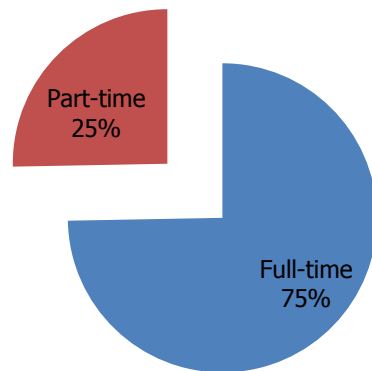
The most popular reason for attending school reported by the Class of 2011 at six months out was to enhance professional development for one's current position/career (49%). Compared to the Class of 2009, 2011 graduates cited "required certification/licensure" more frequently (38% in 2011 v. 28% in 2009) as at least one of their reasons for attending school.

Field of study



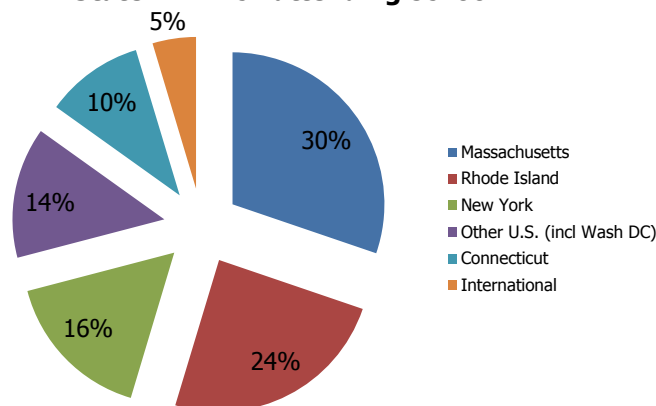
The most popular fields of post-graduate study reported at six months out by the Class of 2011 were Business (23%), Education (18%), Law (15%), and Medicine/related (13%). Compared to 2009, Class of 2011 graduates were less likely to report studying in the arts and humanities (1% in 2011 v. 9% in 2009) or in medicine/related fields (13% in 2011 v. 20% in 2009) and more likely to report they were studying law (15% in 2011 v. 8% in 2009). [Note: percentages below 0.5 round to 0]

Full- or part-time study?



Three of every four Class of 2011 graduates who were attending school at six months out reported they were doing so on a full-time basis (75%). The Class of 2009 reported a slightly higher ratio of full- to part-time study (81%/19%).

State in which attending school



Nearly one of every three Class of 2011 graduates who was attending school at six months out reported they were doing so in Massachusetts (30%) and four of every five were attending school in either Massachusetts, Rhode Island, New York, or Connecticut (80%). These percentages were very similar to those reported by the Class of 2009.

Selected places of employment/service

*AmeriCorps
Amica
Bain Capital
Blue Cross & Blue Shield of Rhode Island
Brigham and Women's Hospital
Brown Brothers Harriman
CBS/CBS Radio
City Year
Clear Channel Communications
EMC²
Ernst & Young
Federal Trade Commission
Fidelity Investments
Goodwin Procter
Hewlett-Packard
IBM
John Hancock
John Wiley & Sons
KPMG
Liberty Mutual
Lord & Taylor
Massachusetts General Hospital
MEDITECH
Memorial Sloan-Kettering Cancer Center
Merrill Lynch
Nestle
Northeastern University
PricewaterhouseCoopers
Providence College
Raytheon
Rhode Island Hospital
Rice McVaney Communications
State Street
Target
The Hartford
Tiffany & Co.
Towers Watson
United States Army
...and elementary/secondary schools throughout the U.S.*

Selected schools PC graduates attending

*Adelphi University
Bentley University
Boston College
Boston University
Bryant University
Central Connecticut State University
Columbia University
Emerson College
Fairfield University
Florida State University
Fordham University
Georgetown University
Iona College
Lancaster University (UK)
McGill University (Canada)
New York University
Northeastern University
Northwestern University
Ohio State University
Pennsylvania State University
Providence College
Queens College
Quinnipiac University
Rhode Island College
Roger Williams University
Simmons College
Saint John's Seminary
St. John's University
Suffolk University
Teachers College, Columbia University
The Pontifical North American College
University of Connecticut
University of Glasgow (UK)
University of Massachusetts
University of Missouri
University of New Haven
University of Oregon
University of Pennsylvania
Yale University*



EMPLOYMENT/EDUCATIONAL STATUS SURVEY 2011 - SIX MONTHS OUT

Note: this is a paper mock-up of an online survey; the survey is administered using Zoomerang technology.

1. What is your employment/educational status? *(Choose only one)*
 - * Employed and/or attending school *...If checked, continue at Question 3*
 - * Neither employed nor attending school *...If checked, continue at Question 2 and end survey there*

2. As you indicated that you are "neither employed nor attending school," please answer the following questions regarding your current status. Are you?
 - * Waiting to hear from a prospective employer about an offer? (Y/N)
 - * Not employed, but seeking employment? (Y/N)
 - * Waiting to hear from a graduate/professional school about admission? (Y/N)
 - * Not seeking admission to a graduate/professional school, but planning to do so in the future? (Y/N)
 - * Is there something else you're doing now that isn't captured in the questions above? Please describe.

3. Are you currently employed?
If YES, continue with Question 4
If NO, continue with Question 12

4. What is your current employment status? *(Choose only one)*
 - * Employed full-time
 - * Employed part-time
 - * Participating in full-time volunteer service program/corps
 - * Participating in part-time volunteer service program/corps
 - * Other _____

5. Which category best reflects your employment/service? *(Choose only one)*

* Accounting	* Human Services
* Arts & Entertainment	* Information Technology
* Athletics/Sports	* Insurance
* Communications/Journalism/Publishing	* Law
* Education	* Marketing/Advertising
* Financial Management/Consulting/Sales	* Military
* Fund Raising/Resource Development	* Religious Life
* Government/Government Relations	* Retail
* Health Care/Health Policy/Health Admin	* Scientific Research/Engineering
* Hospitality	* Other _____

6. Is this the field in which you want to be working?
 - * Yes
 - * No

7. Where are you currently working?
 Employer Name _____
 Position Title _____
 Start Date (month/year) _____
 Location (city/state or foreign nation) _____

8. How did you first hear about your position? *(Choose all that apply)*

* Employment Agency	* Providence College Career Office
* Family/Friends	* Providence College Faculty/Staff (not Career Services)
* Internship with employer	* Self-initiated
* Job/Career Fair(s)	* Web site - employer's
* Networking	* Web site other than employer's
* Newspaper	* Other _____
* Providence College Alumni/ae	

9. Did you receive the job offer for this position prior to graduating from PC?
 - * Yes
 - * No



10. What is your current salary range? (Choose only one)

- * Less than \$25,000
- * \$25,000-29,999
- * \$30,000-34,999
- * \$35,000-39,999
- * \$40,000-44,999
- * \$45,000-49,999
- * \$50,000 or over

11. How would rate your overall satisfaction with your position?

- * Very satisfied
- * Somewhat satisfied
- * Neither satisfied nor dissatisfied
- * Somewhat dissatisfied
- * Very dissatisfied

12. Are you currently attending school?

If YES, continue with Question 13

If NO, continue to question on whether or not respondent plans to attend school in the future and, if so, what type of degree do they plan to pursue, then survey ends

13. What is your current educational status? (Choose only one)

- * Degree-seeking, Master's program
- * Degree-seeking, Doctoral program
- * Degree-seeking, Professional program
- * Non-degree seeking, Continuing education/enrichment
- * Certificate-seeking, Technical

14. Are you a full-time or part-time student?

- * Full-Time
- * Part-Time

15. What is your current field of study? (Choose only one)

- | | |
|---------------------------------------|--------------------------------|
| * Arts & Humanities | * Law |
| * Biological & Physical Sciences/Math | * Medicine/Medical-related |
| * Business | * Religious Studies/Theology |
| * Education | * Social & Behavioral Sciences |
| * Human Services | * Other _____ |
| * Information Technology | |

16. For what reason(s) are you attending school? (Choose all that apply)

- * Personal enrichment
- * Professional development for current position/career
- * Professional development for different position/career
- * Required certification/licensure
- * Pre-requisite(s) for an advanced degree

17. How satisfied are you that your program is meeting your educational needs?

- * Very satisfied
- * Somewhat satisfied
- * Neither satisfied nor dissatisfied
- * Somewhat dissatisfied
- * Very dissatisfied

18. Educational Institution Name _____

Location (city/state or foreign nation) _____