

CLASS OF 2019 FIRST DESTINATION RESULTS SUMMARY

Knowledge Rate

Both alumni survey and LinkedIn data are now used to construct the annual first destination summaries. The knowledge rate is the percentage of Class of 2019 graduates for whom we have reasonable and verifiable post-graduation information (from survey data, LinkedIn, and/or self-reported emails).

	Survey Respondents	Other Sources	Graduates	Knowledge Rate
Class of 2019	433	317	922	81%

Employment/Educational Status (n=748)

Employment/Educational Status

Employed and/or attending school	96%
Neither employed nor attending school	4%

Employment/Educational Status Breakdown

Employed only	74%
Attending school only	12%
Employed and attending school	10%
Neither employed nor attending school	4%

Employment Status Breakdown

Employed full-time	75%
Employed part-time	15%
Other (e.g., internship, grad assistantship)	7%
Participating in volunteer or service program/corps	2%

Note: The figures above are based on those alumni for whom we were able to verify employment status (n=441).

Full-Time Employment (n = 332)

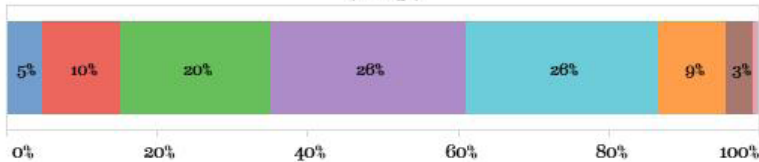
Top Four Fields of Employment

1 - Financial Management/Consulting/Sales	27%
2 - Marketing/Advertising	10%
3 - Education	9%
4 (tie) - Accounting	8%
4 (tie) - Health Care/Health Policy/Health Administration	8%

Top Four Employer Locations

1 - Massachusetts	45%
2 - New York	18%
3 - Rhode Island	10%
4 - Connecticut	8%

What is your current salary range? (n = 231)



Salary Ranges

- Less than \$25,000
- \$25,000-34,999
- \$35,000-44,999
- \$45,000-54,999
- \$55,000-64,999
- \$65,000-74,999
- \$75,000-84,999
- \$85,000 or more

Are you in the field in which you want to be working?

Yes	93%
No	7%

DATA *inform* **DECISIONS** *lead to* **ACTIONS**



Internship (n = 749)

Did you complete an internship (whether for-credit or not-for-credit) while you were at PC?

Yes, I completed an internship.	88%
No, but I completed another career appropriate experience (e.g., career related part-time position, practicum/student teaching, research project or field experience).	8%
No, I did not complete an internship.	4%

Education (n=162)

Are you attending school full-time or part-time?

Full-time	89%
Part-time	11%

Note: The figures above are based on those alumni for whom we were able to verify education status (n=121).

Type of Educational Program

Degree-seeking, Master's program	80%
Degree-seeking, Doctoral program	9%
Degree-seeking, Professional program	6%
Non-degree seeking, Continuing education/enrichment	3%
Certificate-seeking, Technical	1%
Did not report (unable to verify type of ed. program)	1%

Top Four Fields of Study

1 - Business	40%
2 - Education	19%
3 - Medicine/Medical-related	10%
4 - Social & Behavioral Sciences	7%

Top Four Educational Institution Locations

1 - Rhode Island	47%
2 - Massachusetts	21%
3 - New York	7%
4 - Connecticut	4%

Selected Places of Employment/Service

Aetna	Hasbro, Inc.	Robert Half
American Express	Havas Media Group	Santander Bank
Amica Mutual Insurance Company	JP Morgan Chase	Schneider Electric
Apple	Liberty Mutual Insurance	State Street
Bank of America	Lifespan	TechTarget
Boston Children's Hospital	Massachusetts General Hospital	The TJX Companies
Brown Brothers Harriman	Memorial Sloan Kettering	Toast, Inc.
Citizens Bank	Morgan Stanley	Wayfair
CVS Health	National Institute of Health	Yelp
Deloitte	Northwestern Mutual	... and elementary/secondary schools
Ernst and Young	PricewaterhouseCoopers	throughout the U.S.
Fidelity Investments	Providence College	

Selected Schools PC Graduates Attending

Boston College	Johnson & Wales University	St. John's University
Boston University	Massachusetts College of Pharmacy & Health Sciences	Suffolk University
Brandeis University	Mercy College	Tufts University
Clemson University	New York University	University of Chicago
Drexel University	Northeastern University	University of Connecticut
Endicott College	Providence College	University of Michigan
Fordham University	Quinnipiac University	University of Notre Dame
George Washington University	Rhode Island College	University of Pennsylvania
Harvard University	Sacred Heart University	Wake Forest University



CLASS OF 2019 FIRST DESTINATION RESULTS SUMMARY, BY SCHOOL

Knowledge Rate

Both alumni survey and LinkedIn data are now used to construct the annual first destination summaries. The knowledge rate is the percentage of Class of 2019 graduates for whom we have reasonable and verifiable post-graduation information (from survey data, LinkedIn, and/or self-reported emails).

	Survey Respondents	Other Sources (i.e., LinkedIn, Self-reported emails)	Graduates	Knowledge Rate
School of Arts & Sciences	187	88	374	74%
School of Business	181	206	428	90%
School of Professional Studies	64	23	119	73%
Grand Total	433	317	922	81%

Note: There was one additional student in the Class of 2019 who had an individualized major (which does not fall into one of the three schools).

Employment/Educational Status (n=748)

Employment/Educational Status

	Employed and/or attending school	Neither employed nor attending school
School of Arts & Sciences	94%	6%
School of Business	99%	1%
School of Professional Studies	89%	11%
Grand Total	96%	4%

Employment/Educational Status Breakdown (n = 748)

	Employed only	Attending school only	Employed and attending school	Neither employed nor attending school
School of Arts & Sciences	69%	16%	9%	6%
School of Business	82%	8%	9%	1%
School of Professional Studies	54%	17%	16%	13%
Grand Total	74%	12%	10%	4%

Employment Status Breakdown (n = 441)

	Employed full-time	Employed part-time	Participating in volunteer or service program/corps	Other (e.g., internship, grad assistantship)
School of Arts & Sciences	67%	19%	6%	8%
School of Business	82%	10%		8%
School of Professional Studies	74%	22%	2%	2%
Grand Total	75%	15%	2%	7%

The figures above are based on those alumni for whom we were able to verify employment status through survey data only. Typically, we are unable to verify employment status through LinkedIn.

Education Status Breakdown (n = 121)

	Full-time	Part-time
School of Arts & Sciences	86%	14%
School of Business	97%	3%
School of Professional Studies	83%	17%
Grand Total	89%	11%

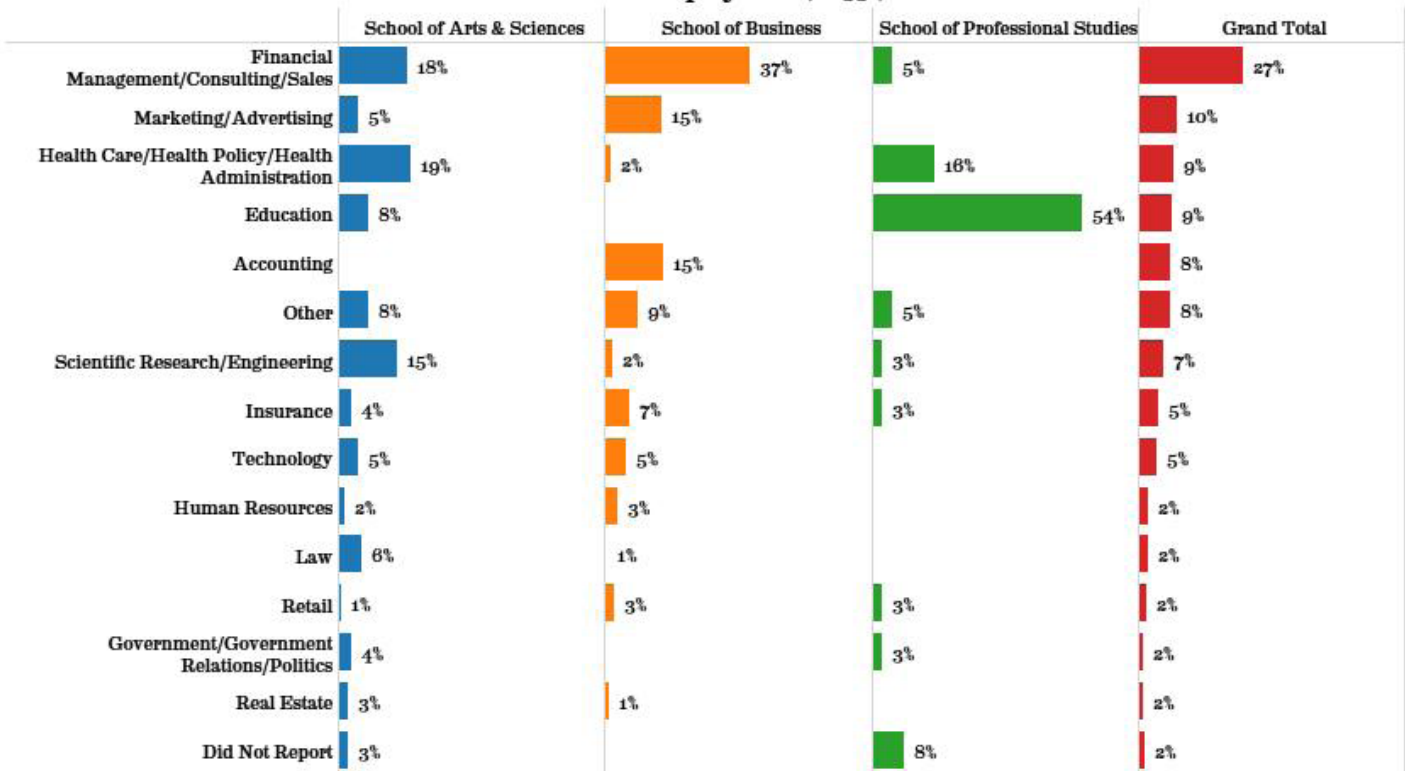
The figures above are based on those alumni for whom we were able to verify education status through survey data only. Typically, we are unable to verify education status through LinkedIn.

DATA *inform* DECISIONS *lead to* ACTIONS



Full-Time Employment Field, Satisfaction

Fields of Employment (n = 332)



How would you rate your satisfaction with your current position?

	Very satisfied	Somewhat satisfied	Neutral	Somewhat dissatisfied	Very dissatisfied
School of Arts & Sciences	60%	25%	11%	4%	1%
School of Business	57%	30%	8%	2%	2%
School of Professional Studies	58%	35%	4%	4%	
Grand Total	58%	29%	9%	3%	1%

Are you in the field in which you want to be working?

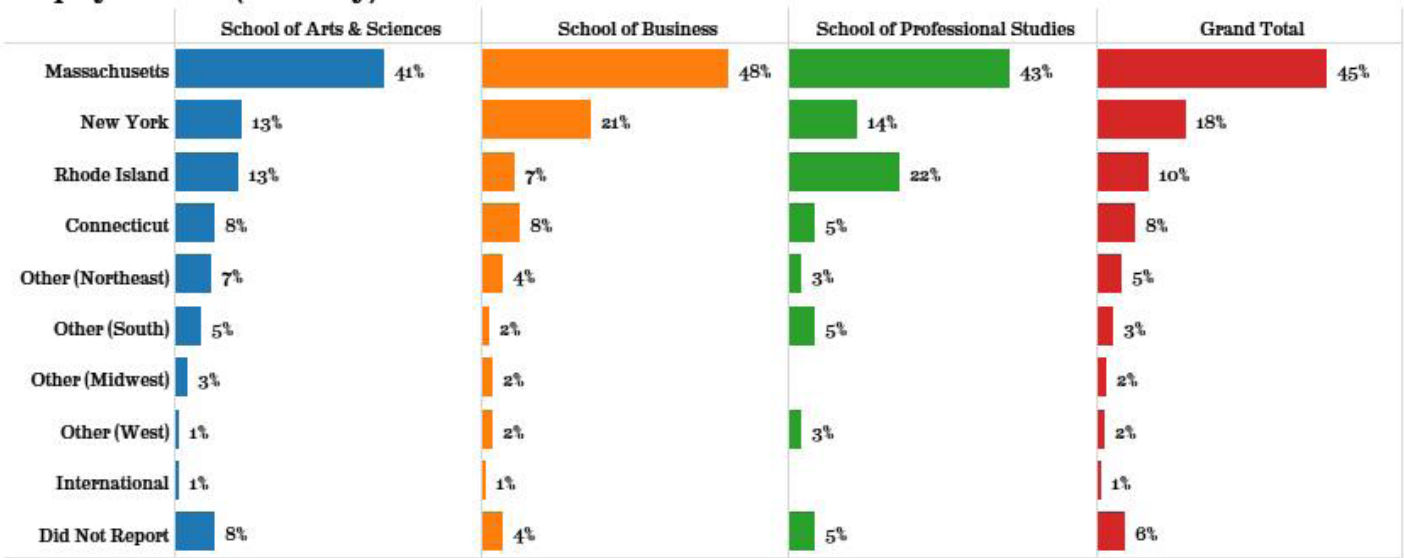
	Yes	No
School of Arts & Sciences	88%	13%
School of Business	85%	5%
School of Professional Studies	100%	
Grand Total	83%	7%

DATA *inform* DECISIONS *lead to* ACTIONS



Full-Time Employment Location, Salary (n = 332)

Employer's State (U.S. Only)



What is your current salary range? (n = 231)



Internship (n = 749)

Did you complete an internship (whether for-credit or not-for-credit) while you were at PC?

	School of Arts & Sciences	School of Business	School of Professional Studies	Grand Total
Yes, I completed an internship.	80%	95%	83%	88%
No, but I completed another career appropriate experience (e.g., career related part-time position, practicum/student teaching, research project or field experience).	15%	2%	15%	8%
No, I did not complete an internship.	5%	3%	2%	4%



Educational Program, Field, Location (n=162)

Type of Educational Program

	Degree-seeking, Master's program	Degree-seeking, Doctoral program	Degree-seeking, Professional program	Certificate-seeking, Technical	Non-degree seeking, Continuing education/enrichment	Did Not Report
School of Arts & Sciences	62%	19%	10%	3%	6%	
School of Business	95%					2%
School of Professional Studies	83%	3%	7%		3%	3%
Grand Total	80%	9%	6%	1%	3%	1%

Field of Study

	School of Arts & Sciences	School of Business	School of Professional Studies	Grand Total
Business	12%	88%	3%	40%
Education	19%	3%	55%	19%
Medicine/Medical-related	23%		3%	10%
Social & Behavioral Sciences	16%		3%	7%
Biological & Physical Sciences/Math	14%		3%	6%
Law	6%		10%	4%
Human Services		2%	14%	3%
Arts & Humanities	4%	2%		2%
Other	1%		3%	1%
Did Not Report	4%	6%	7%	6%

Educational Institution Location

	School of Arts & Sciences	School of Business	School of Professional Studies	Grand Total
Rhode Island	17%	84%	34%	47%
Massachusetts	32%	6%	28%	21%
New York	10%	2%	14%	7%
Connecticut	6%	2%	3%	4%
Other (Midwest)	14%	2%		7%
Other (Northeast)	9%	2%	7%	6%
Other (South)	7%	2%		4%
Other (West)	1%		3%	1%
Did Not Report	3%	2%	10%	4%

The above figures are based on both survey and LinkedIn data.

Reasons for Attending (n=111)

Reasons for Attending School

(select all that apply; percentages will total more than 100%)

	Professional development for current position/career	Personal enrichment	Professional development for different position/career	Required certification/licensure	Pre-requisite(s) for an advanced degree
School of Arts & Sciences	54%	41%	41%	29%	8%
School of Business	72%	34%	14%	34%	10%
School of Professional Studies	70%	39%	35%	39%	4%
Grand Total	62%	39%	32%	32%	8%

